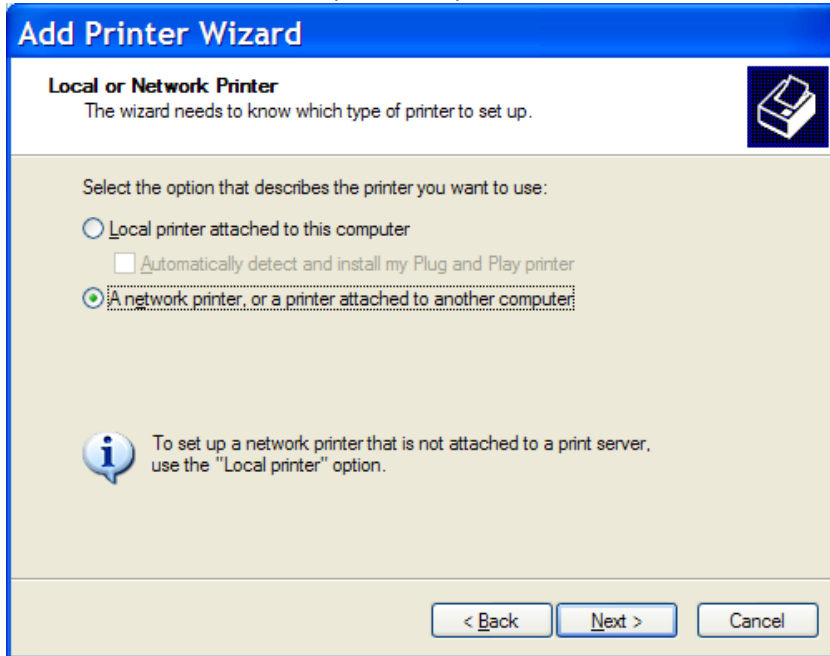


Installing a Network Printer

1. Start
2. Printers & Faxes
3. Add Printer (left area under Printer Tasks)
4. Printer Wizard pops up
5. Next
6. Choose "a network printer or printer..."




Add Printer Wizard

Local or Network Printer
The wizard needs to know which type of printer to set up.

Select the option that describes the printer you want to use:

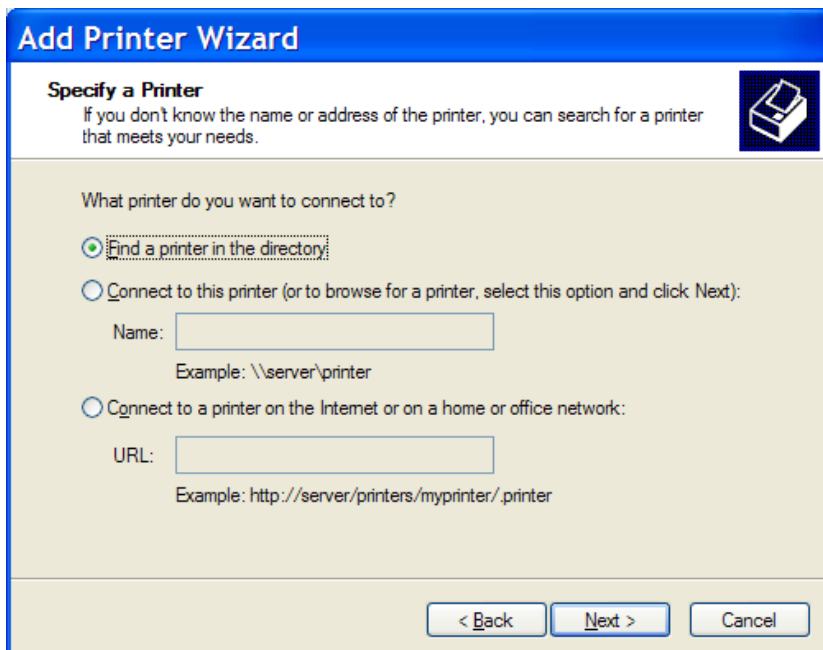
Local printer attached to this computer
 Automatically detect and install my Plug and Play printer

A network printer, or a printer attached to another computer

 To set up a network printer that is not attached to a print server, use the "Local printer" option.

< Back Next > Cancel

7. Next
8. Find a Printer in the directory



Add Printer Wizard

Specify a Printer
If you don't know the name or address of the printer, you can search for a printer that meets your needs.

What printer do you want to connect to?

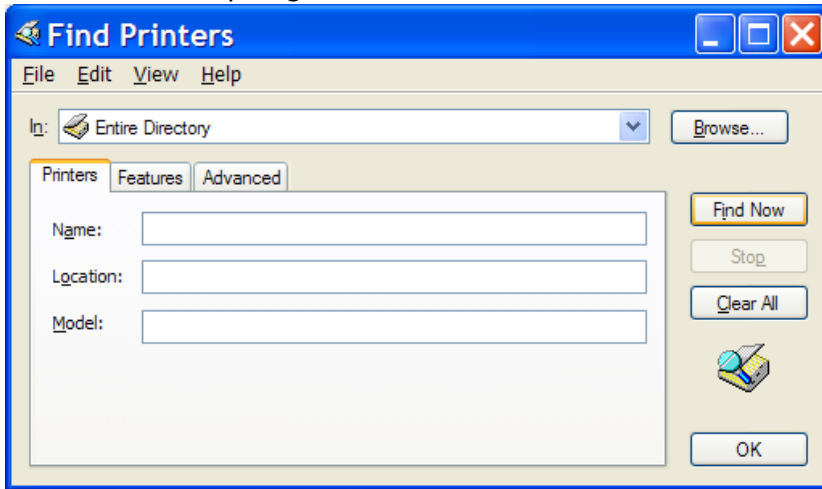
Find a printer in the directory

Connect to this printer (or to browse for a printer, select this option and click Next):
Name:
Example: \\server\printer

Connect to a printer on the Internet or on a home or office network:
URL:
Example: http://server/printers/myprinter/printer

< Back Next > Cancel

9. Next
10. Leave everything blank and choose FIND NOW



11. Double-click the printer you want to load (you can tell by location and whether it is Color or B&W)
HINT: Click on "NAME" at the top of the column and it puts all the printers in alphabetical order.
12. Do you want to make it the default (answer yes or no)
13. Next
14. Finish